



BSW
Timber

BSWGROUP member of binderholz ■

The Big Book

See Timber in a New Light

Landscaping | Decking | Cladding | Fencing | Construction | Internal



Front Cover Credit: Koto | Kenton Jones | Olco Studios

8	The Fencing Range
10	UC4 Posts
12	Boards and Rails
14	Screening Battens
16	The Landscaping Range
18	Sleepers
20	Timber Decking and UC4 Joists
22	Tongue and Groove Boards
24	The Construction Range
26	Machined Carcassing
28	General Construction Timber
30	Beams
32	Agricultural Construction Timbers
34	The Mass Timber Range
36	Cross Laminated Timber
38	Glulam
40	The Cladding Range
42	Cladding
44	Heavy Duty Feather Edge
46	IRO External Cladding
48	The Internal Range
50	Decorative Micro CLT
52	Softwood PSE and Door Linings
53	MDF
54	Skirtings
55	Mouldings
56	Timber Kits and Bespoke Mouldings
58	Powersheds
60	Garden Sheds
62	Summerhouses
64	Log Cabins
66	The Pallet LOOP
68	Hotties XL
70	Technical Information
72	Treatment Information
73	Species Information
74	Responsible Purchasing
74	Warranty Information



**BSW
GROUP**

member of **binderholz**

Building
Sustainable
Worlds

Forget what you know about wood

**We're forging an integrated
supply chain to create value
and sustain long-term growth.**

Timber can transform buildings and cities, capture millions of tonnes of carbon, and make a lasting positive impact on our planet.

But unlocking its full potential requires a fully integrated supply chain. So, we've brought together a group of businesses, with a team of experts, spanning every stage of the process.

As the UK's largest forestry and timber group, and member of Binderholz – Europe's leading timber processing operation – we're using our scale, flexibility and capabilities to help reshape our industry and make change happen now – providing more stability and choice, and investing in innovation and education.

In short, we're committed to being the UK's most innovative, technologically advanced and sustainable timber business.

Our product range is the widest of any sawmiller in the UK and with innovation at the heart of everything we do, our focus is on bringing the latest developments to the market as quickly as possible, ensuring your options are both wide ranging and on-trend.

Scan to watch our group operations video





Building
Sustainable
Worlds

BSW Group is the UK's largest forestry and timber group, and a member of Binderholz – Europe's leading timber processing operation.

As a group we're forging an integrated supply chain to create value and sustain long-term growth.

We're using our scale, flexibility, and capabilities to help reshape our industry and make change happen now. In short, we're committed to being the UK's most innovative, technologically advanced, and sustainable timber business.



Maelor Forest Nurseries produces bare root trees and shrubs suitable for forestry, hedging and native woodland planting. Maelor markets approximately 35 million trees a year to customers throughout the UK and Europe.



Tilhill Harvesting boasts state-of-the-art forestry equipment and market-leading capabilities that allow the business to harvest some of the most extensive and complex forests in the UK.



BSW Timber Solutions, formerly SCA Wood UK, specialise in manufacturing and distributing timber and associated products to the home improvement and builders' merchant sectors.



The Pallet LOOP are our arm, incentivising pallet returns via a cost-effective, easy-to-use, returnable pallet system.



Tilhill have been active for almost 70 years and represent 25% of all UK-managed forestry. They employ in-house ecologists who carry out Environmental Impact Assessments and plan the pre-harvesting stage to avoid protective species harvesting delays. Tilhill are also one of the UK's leading landscapers, working for the likes of Highways England.



BSW Timber have five sawmill sites across the UK, and one in Latvia, that manufacture and supply a wide range of quality, FSC®-certified sawn products for an array of industries, including fencing, landscaping, cladding, construction, DIY, decking, and packaging.



Pallet 2 Packaging, are a manufacturer and distributor of bespoke and reconditioned timber pallets and packaging solutions for various industries throughout Scotland.



Scott Pallets are a leading manufacturer of new, bespoke, and reconditioned timber pallets, producing over 30 million pallets per year.

The Fencing Range

A garden essential, our quality British timber fencing products help to add a layer of privacy, create shelter from the noise and elements, and act as a beautiful natural border to your property.

We produce everything from fencing component staples such as feather edge and post and rail, to specialist fencing solutions such as UC4 incised products.

All of our responsibly sourced timber fencing products are grown, sawn and sold right here in the UK, meaning you can be assured that your new fencing is both kind to the environment and sourced from sustainably managed woodlands.

UC4 Posts

Our state-of-the art incising technology guarantees that our chemical treatment can impregnate a minimum of 6mm into the timber. This ensures maximum protection for the product, meaning that we can offer a guaranteed 15-year desired service life and a UC4 classification.

What is incising?

When a piece of timber has been incised, this means that a bladed machine has made tiny incisions along the surface of the timber. Incising allows preservative treatment to penetrate further into the timber, increasing its life span without affecting its strength.

What is UC4?

Use Class 4, or UC4, is a class within BS EN 335-2 that determines where timber products are or are not suitable for use. If a timber product meets UC4 classification, that means that it is suitable to be used in ground contact.

UC4 Incised Posts

Thickness (mm)	Width (mm)	Length (m)	FSC® Certified	Use Class
75	75 100 125 150	1.5 1.8 2.1 2.4 3.0	Yes	UC4
100	100 125 150	1.5 1.8 2.1 2.4 3.0	Yes	UC4
125	125	2.1 2.4	Yes	UC4
150	150	2.1 2.4	Yes	UC4
175	175	2.1 2.4	Yes	UC4
200	200	2.1 2.4	Yes	UC4

UC4 Pine Posts*

Thickness (mm)	Width (mm)	Length (m)	FSC® Certified	Use Class
75	75	1.5 1.8 2.1 2.4 2.7 3.0 3.6	Yes	UC4
75	100	2.4	Yes	UC4
75	125	1.8 2.4	Yes	UC4
75	150	1.8 2.4	Yes	UC4
100	100	1.5 1.8 2.1 2.4 2.7 3.0 3.6	Yes	UC4
100	125	2.1 2.4 2.7	Yes	UC4
100	200	2.4	Yes	UC4

*Selected areas only. Other sizes are available on request.

UC4 Eased Edge Posts

Thickness (mm)	Width (mm)	Length (m)	FSC® Certified	Use Class
100	100	2.4 3.0 3.6	Yes	UC4

Redwood H Posts

Thickness (mm)	Width (mm)	Length (m)	FSC® Certified	Use Class
100	100	2.4 3.0 3.6	Yes	UC4

Key: ● Green Treatment ● Brown Treatment



Credit: PDB Timber Solutions

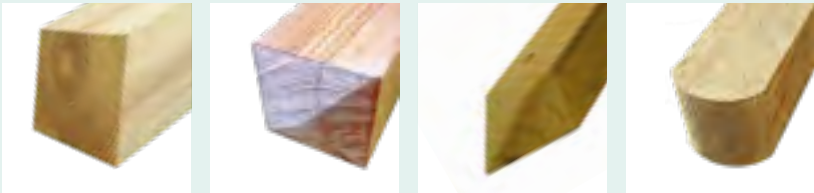


Credit: Bark Brick and Block Ltd



Machining Options

Sawn Posts



Single Weather Four-Way Weather Four-Way Point Drive Round Top



Birds Mouth V Notched Morticed H Post

Palisades



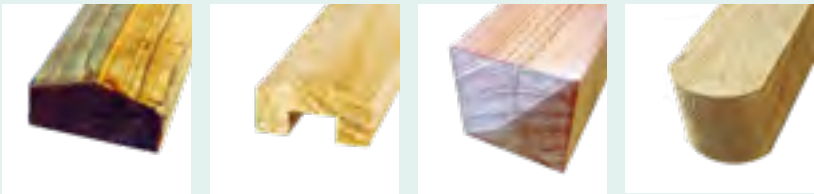
Pointed Top Round Top Chiselled Top Eased Edge Post

Rails



Scarfed End Arris Arris Rail Cant Rail D Rail

Capping Rails



Twice Weather Weather Grooved Four-Way Weather Round Top

Gate Posts



Twice Weather Weather Grooved Four-Way Weather Round Top

Boards and Rails

BSW's quality fencing timbers are produced with the latest sawmilling technology and are ideal for a range of domestic, agricultural and industrial applications.

Available with either green TANALITH or brown TANATONE high pressure treatment, all of our fencing boards, posts and rails are treated to guarantee the longest possible service life.

For specialist and professional fencing applications, our range includes boards notching and morticing profiles to ensure that you have the right component whatever your project.

Palisades

The classic fencing option, palisade fencing completes a traditional look to any garden and can perfectly frame any garden walkway. Alternative options for your palisade tops are available to suit your particular project, whatever the style you decide upon.

Post and Rail

Ideal for boundaries around fields, paddocks, ménages and more, this design provides a cost effective and sturdy solution for ensuring the safety of both livestock and pedestrians.

Knee Rail

Often used commercially to border pathways in school, supermarkets, car parks, playgrounds and shopping areas– our knee rail fencing sits at just the right height and offers an alternative low cost yet attractive solution for directing footfall or vehicles along roads or pathways.



Credit: Designer Garden Rooms & Landscapes



Credit: PDB Timber Solutions



Boards

Square Edge

Thickness (mm)	Width (mm)	Length [palisades] (m)	FSC® Certified	Use Class
16	75 100 125 150	2.1 2.4 3.0 3.6 4.2 4.8	Yes	UC3
19	75 100 125 150	2.1 2.4 3.0 3.6 4.2 4.8	Yes	UC3
22	75 100 125 150	2.1 2.4 3.0 3.6 4.2 4.8	Yes	UC3

Feather Edge

Thickness (mm)	Width (mm)	Length (m)	FSC® Certified	Use Class
22	100 125 150	1.5 1.65 1.8 3.6	Yes	UC3
32	175	3.6 4.8	Yes	UC3
38	200	3.6 4.8	Yes	UC3

Key: ● Green Treatment ● Brown Treatment

Rails

Capping Rails

Thickness (mm)	Width (mm)	Length (m)	FSC® Certified	Use Class
32	63	2.4 3.0 3.6	Yes	UC3
38	63	2.4 3.0 3.6	Yes	UC3

D Rails

Thickness (mm)	Width (mm)	Length (m)	FSC® Certified	Use Class
38	100	3.6 4.8	Yes	UC3

Sawn Rails

Thickness (mm)	Width (mm)	Length (m)	FSC® Certified	Use Class
38	75 88 100	3.0 3.6 4.2 4.8	Yes	UC3
47	75 100	3.0 3.6 4.2 4.8	Yes	UC3

Counter Rails

Thickness (mm)	Width (mm)	Length (m)	FSC® Certified	Use Class
22	50 63 75	2.4 3.0 3.6	Yes	UC3
32	50 63 75	2.4 3.0 3.6	Yes	UC3

Cant Rails

Thickness (mm)	Width (mm)	Length (m)	FSC® Certified	Use Class
47	125 175	2.4 3.0	Yes	UC3

Arris Rails

Thickness (mm)	Width (mm)	Length (m)	FSC® Certified	Use Class
75	75	2.4 2.7 3.0 3.6	Yes	UC3

Key: ● Green Treatment ● Brown Treatment

Screening Battens



Our softwood timber screening battens are designed for durability and longevity, making them a perfect choice for outdoor projects.

Each batten is made from slow-grown Scandinavian pine, known for its strength and stability. High-pressure treatment ensures long-lasting performance, while the eased edges aid water runoff, reducing the risk of moisture damage over time. With longer lengths, you'll have fewer joins, creating a cleaner and more seamless finish for your projects.

Versatile and adaptable, these battens are perfect for privacy slats, fences, or any project requiring a reliable timber solution. Whether you choose to paint or stain, the surface readily accepts finishes, allowing you to customize the look to your style. Sourced from sustainable forests, our battens also offer an environmentally responsible option without compromising quality or durability.

A Versatile Screening Solution

Our Softwood Timber Screening Battens are a versatile solution, ideal for both privacy slats and fences. Their adaptable design makes them suitable for a wide range of outdoor projects, offering flexibility whether you're aiming for a decorative or functional finish.

Screening Batten



Scan to see how to install



Pairs perfectly with our Eased Edge UC4 Posts, see [page 10](#) for more info

Credit: Bark Brick and Block Ltd



Credit: All Nu Landscapes



Credit: Healy Fencing & Landscaping



Screening Battens			
Thickness (mm)	Width (mm)	Length (mm)	PEFC Certified
25	50	4200	Yes
Key: ● Green Treatment			



The Landscaping Range

Your garden is an extension of your home; whether for work, fitness, or play. It's your little piece of solitude to relax from a hectic world, or it's your safe-haven from which to entertain your friends and family throughout the day and night. Our landscaping range has the timber components you need to create your garden vision.

Whatever your needs, our inspiring collection of landscaping products can deliver the solution you are seeking. Be it an inspirational family area or an outdoor working environment, our timber landscaping products deliver a quality that is unparalleled.

Our diverse range of garden sleepers is produced using our innovative sawmilling technology to exacting standards, adding a natural charm to any garden.



Sleepers

Our range of timber sleepers provides complete versatility when transforming your outdoor space.

If you are creating raised flower beds, a seating area or a play area for little gardeners, our comprehensive range will allow you to make the perfect choice for any situation.

Our charred sleepers utilise our innovative IRO yakisugi technology to create a completely unique raised woodgrain effect.

For ultimate peace of mind, our UC4 Collection includes incised sleepers, for those who want the added security of a 15-year UK based guarantee.

Sawn

Thickness (mm)	Width (mm)	Length (m)	FSC® Certified	Use Class
100	200	2.4	Yes	UC3
125	250	2.4	Yes	UC3

UC4 Incised

Thickness (mm)	Width (mm)	Length (m)	FSC® Certified	Use Class
100	200	2.4	Yes	UC4
125	250	2.4	Yes	UC4

Smooth

Thickness (mm)	Width (mm)	Length (m)	FSC® Certified	Use Class
100	200	2.4	Yes	UC3

Charred Brushwood

Thickness (mm)	Width (mm)	Length (m)	FSC® Certified	Use Class
100	200	2.4 3.6 4.2	Yes	UC3
125	250	2.4	Yes	UC3

Key: ● Green Treatment ● Brown Treatment



Sawn



UC4 Incised



Smooth



Charred Brushwood



Charred Brushwood Mini Sleepers



Timber Decking and UC4 Joists

The right deck can make us completely re-think the way we use our gardens.

Our reversible decking range includes a range of grooved, smooth, and reeded decking options in various dimensions. All our decking range is manufactured from high quality European Redwood and is TANALITH-E green treated to enhance its service life.

For those looking for extra surety underfoot, we also manufacture a range of anti-slip timber decking. Machined from high quality European Redwood, our anti-slip decking features anti-slip strips interspersed within the grooves, bringing enhanced safety and comfort to your timber deck, whatever the season.



Grooved & Reeded (Narrow)

Grooved & Reeded (Wide)

Smooth & Grooved (Narrow)

Smooth & Grooved (Wide)

Smooth & Grooved (Anti-Slip)

Grooved & Reeded (Anti Slip)

UC4 Incised Joists

Graded Joists

Deck Boards

Grooved & Reeded (Narrow)					
Thickness (mm)	Width (mm)	Length (m)	PEFC Certified	Use Class	
32	100	3.6 4.8	Yes	UC3	
Grooved & Reeded (Wide)					
Thickness (mm)	Width (mm)	Length (m)	PEFC Certified	Use Class	
32	150	3.6 4.8	Yes	UC3	
Smooth & Grooved (Narrow)					
Thickness (mm)	Width (mm)	Length (m)	PEFC Certified	Use Class	
38	125	3.6 4.8	Yes	UC3	
Smooth & Grooved (Wide)					
Thickness (mm)	Width (mm)	Length (m)	PEFC Certified	Use Class	
32	150	3.6 4.8 5.4	Yes	UC3	
Smooth & Grooved (Anti-Slip)					
Thickness (mm)	Width (mm)	Length (m)	PEFC Certified	Use Class	
38	125	4.8	Yes	UC3	
Grooved & Reeded (Anti-Slip)					
Thickness (mm)	Width (mm)	Length (m)	PEFC Certified	Use Class	
32	125	4.8	Yes	UC3	

Key: ● Green Treatment

Components

Dual Rail					
Thickness (mm)	Width (mm)	Length (m)	FSC® Certified	Use Class	
38	100	3.0 3.3 3.6 3.9 4.2 4.5 4.8 5.1 5.4	Yes	UC3	
38	125	3.0 3.3 3.6 3.9 4.2 4.5 4.8 5.1 5.4	Yes	UC3	
Handrail Fillet					
Thickness (mm)	Width (mm)	Length (m)	FSC® Certified	Use Class	
16	50	3.6	Yes	UC3	
Blank / Turned / Stop Chamfered Spindles					
Thickness (mm)	Width (mm)	Length (m)	FSC® Certified	Use Class	
41	41	0.9	Yes	UC3	
Chamfered & Beaded / Turned Newel Posts					
Thickness (mm)	Width (mm)	Length (m)	FSC® Certified	Use Class	
82	82	1.3	Yes	UC3	
UC4 Incised Joists					
Thickness (mm)	Width (mm)	Length (m)	FSC® Certified	Use Class	
47	150	2.4 3.6	Yes	UC4	

Key: ● Green Treatment

Tongue and Groove Boards

One of our most versatile products, our timber tongue and groove boards are engineered to provide easy installation and a perfect finished fit.

Thanks to our high-precision machining techniques, and with a natural durability, our T&G boards are easier than ever to use. T&G boards can be used for building raised beds, planter boxes, gravel or decking boards, cladding or even a heavy-duty dividing wall.

They are available in a green finish and treated with TANALITH wood preservative for a longer life, while further protective and decorative coatings can be applied should further protection be needed.

Tongue and Groove				
Thickness (mm)	Width (mm)	Length (m)	FSC® Certified	Use Class
47	200	3.6	Yes	UC3
Key: ● Green Treatment ● Brown Treatment				



The Construction Range

No matter the job, our range of sustainable construction timbers will ensure that you have the perfect product to hand to complete the project quickly, efficiently, and safely.

We cut a huge variety of section sizes and lengths across our network of mills, meaning that whatever size you need we can help with. Our strength graded timbers are also kiln dried and treated for extra durability.

In addition to its versatility and strength, timber has a positive environmental impact on your construction project.

As well as Easi Edge we have a range of beams, large sections and agricultural timbers - so whatever the job, we have the product to help.



Machined Carcassing

Our classic Easi Edge and CLS ranges of C16 construction timbers can be supplied in various dimensions and lengths and can also be high and low pressure treated.

Machined, Kiln Dried C16 Graded Construction Timber
All our carcassing products are dimensionally stable and regularised for precise installation. We offer a high-pressure preservative treatment as standard although a low pressure treatment is available on request subject to availability.

Thanks to its smooth surface and eased edges, this timber is easier to work with. It has been machined to ensure all dimensions are regular and true, resulting in a quicker and better fit. The finished job looks neater, and you can paint, stain, or preserve it more easily too.

C16 Graded CLS Construction Timber

Nominal size (mm)	Finished size (mm)	Length (m)	FSC® Certified	Use Class
50 x 75	38 x 63	2.4 3.0 4.8	Yes	UC2/3
50 x 100	38 x 89	2.4 3.0 4.8	Yes	UC2/3
50 x 150	38 x 140	2.4 3.0 4.8	Yes	UC2/3

C16 Graded Construction Timber



Nominal size (mm)	Finished size (mm)	Length (m)	FSC® Certified	Use Class
47 x 50*	45 x 45	2.4 3.0 3.6 4.2 4.8	Yes	UC2/3
47 x 75*	45 x 70	2.4 3.0 3.6 4.2 4.8	Yes	UC2/3
47 x 100	45 x 95	2.4 3.0 3.6 4.2 4.8	Yes	UC2/3
47 x 125	45 x 120	2.4 3.0 3.6 4.2 4.8	Yes	UC2/3
47 x 150	45 x 145	2.4 3.0 3.6 4.2 4.8	Yes	UC2/3
47 x 175	45 x 170	2.4 3.0 3.6 4.2 4.8	Yes	UC2/3
47 x 200	45 x 195	2.4 3.0 3.6 4.2 4.8	Yes	UC2/3
47 x 225	45 x 220	2.4 3.0 3.6 4.2 4.8	Yes	UC2/3
75 x 100	72 x 95	3.0 3.6 4.2 4.8	Yes	UC2/3
75 x 150	72 x 145	3.0 4.2 4.8	Yes	UC2/3
75 x 175	72 x 170	2.4 4.2 4.8	Yes	UC2/3
75 x 200	72 x 195	3.0 3.6 4.2 4.8	Yes	UC2/3
75 x 225	72 x 220	3.0 4.2 4.8	Yes	UC2/3

*Not C16
Key: ● Green Treatment ● Brown Treatment



General Construction Timber

BSW also supply a wide range of unseasoned, general construction timbers suitable for a vast array of purposes.

Our unseasoned timbers are available in both green and brown high-pressure preservative treatment for added protection and longevity.

Sawn Battens

Quality, treated sawn batten timbers. Also available with high pressure preservative protection.

Formwork

These sections are generally used in the fabrication of temporary concrete moulds during major construction projects.

Unseasoned Timber

For applications in construction where an unseasoned (not kiln dried) and ungraded construction timber may be acceptable or beneficial.

Scaffold Boards

Our UC3 Scaffold Boards are manufactured in compliance with BS2482 and ideal for construction purposes.

Sawn Battens

Thickness (mm)	Width (mm)	Length (m)	FSC® Certified	Use Class
19	38	3.0 3.6 4.2 4.8	Yes	UC2/3
25	38 50	3.0 3.6 4.2 4.8	Yes	UC2/3

Unseasoned Timber

Thickness (mm)	Width (mm)	Length (m)	FSC® Certified	Use Class
38	50 75 88 100 150 200 225	2.4 3.0 3.6 4.2 4.8	Yes	UC2/3
47	50 75 100 125 150 175 200 335	2.4 3.0 3.6 4.2 4.8	Yes	UC2/3
75	100 150 175 200 225	2.4 3.0 3.6 4.2 4.8	Yes	UC2/3

Formwork

Thickness (mm)	Width (mm)	Length (m)	FSC® Certified	Use Class
47	100 150	4.8	Yes	UC2/3
75	100 150	4.8	Yes	UC2/3

Scaffold Boards

Thickness (mm)	Width (mm)	Length (m)	FSC® Certified	Use Class
38	225	3.9	Yes	UC3

Key: ● Green Treatment ● Brown Treatment



Beams

Manufactured from UK grown Douglas Fir, and known for their structural integrity, our unique softwood beams are an attractive alternative to European oak, bringing a natural touch into any home.

Although their practical use in supporting roofs, ceilings and walls is well known, they are also popular when used as decorative features such as mantles and faux exposed beams.

As well as being used for residential homes they are also suitable for timber framed buildings, barn conversions and restoration projects.

Supplied in both ungraded and visually graded sections, we guarantee that you can make the right choice.

Our visually graded sections are available in GS & SS grades which dependent on species and section sizes are equivalent to grades C14, C16, C18, C22 and C24, giving maximum design flexibility.



Beams				
Width (mm)	Length(m)	Strength Grade	Treatment	Use Class
75 - 450 x 150 - 400	2.4 - 8.0	GS SS		UC2/3
75 - 450 x 150 - 400	2.4 - 8.0	GS SS	Untreated	UC2/3
Key: Green Treatment Brown Treatment				



Agricultural Construction Timbers

BSW also supply a range of timbers that are perfectly suited for agricultural purposes.

Horizontal structural timber purlins used in roof construction help to support the loads from the roof deck or sheathing and are supported by the principal rafters and/or the building walls.

Unseasoned Timber

Used in construction applications where an unseasoned (not kiln dried) and ungraded product may be acceptable or beneficial.

Large Sections and Long Lengths

All strength graded timber for agricultural buildings is wet graded visually or machine wet graded to class C16. Visually graded timber is available subject to species availability and agreement.



Purlins

Thickness (mm)	50 (mm)	75 (mm)	100 (mm)	125 (mm)	150 (mm)	175 (mm)	200 (mm)	225 (mm)	Lengths (m)	Treatment	Use Class
38	✓	✓	✓	-	✓	-	✓	-	2.4 3.0 3.6 4.2 4.8	● ●	UC2/3
47	✓	✓	✓	✓	✓	✓	✓	✓	2.4 3.0 3.6 4.2 4.8	● ●	UC2/3
75	-	-	✓	-	✓	-	✓	✓	2.4 3.0 3.6 4.2 4.8	● ●	UC2/3

Agricultural Building Components

Thickness (mm)	Width (mm)	Length (mm)	Ungraded	Machine Graded	Visually Graded	Use Class
63	175	4572 4877 6096	Yes	C16	Yes	UC2/3
75	100	4572 4877 6096	Yes	C16	Yes	UC2/3
75	125	4572 4877 6096	Yes	C16	Yes	UC2/3
75	150	4572 4877 6096	Yes	C16	Yes	UC2/3
75	175	4572 4877 6096	Yes	C16	Yes	UC2/3
75	200	4572 4877 6096	Yes	C16	Yes	UC2/3
75	225	4572 4877 6096	Yes	C16	Yes	UC2/3
75	250	4572 4877 6096	Yes	C16	Yes	UC2/3

Yorkshire Boarding

Thickness (mm)	Width (mm)	Length (mm)	Ungraded	Machine Graded	Visually Graded	Use Class
22	125	5486 6096	N/A	N/A	N/A	UC2/3
22	150	3000 3048 3600	N/A	N/A	N/A	UC2/3
		3658 4200 4267				UC2/3
		4500 4572 4800				UC2/3
		4877 5486 6096				UC2/3

Agricultural Materials

Thickness (mm)	Width (mm)	Length (mm)	Ungraded	Machine Graded	Visually Graded	Use Class
47	175	4572 6000 6096	N/A	N/A	N/A	UC2/3
47	200	4572 6000 6096	N/A	N/A	N/A	UC2/3

Key: ● Green Treatment ● Brown Treatment

The Mass Timber Range

BSW Group is a proud member of Binderholz. With sites across Europe and the USA, Binderholz is Europe's largest timber processor and one of the largest processors of sawn timber in the world.

binderholz ■

A family run business founded over 60 years ago in Austria, Binderholz has amassed a global reputation for utilising reliability, tradition, innovation, and technology in its processing.

Today Binderholz is a leading player in the global timber industry using state-of-the-art technologies and production methods to cement this reputation in the market. BSW and Binderholz values closely align with both businesses priding themselves on implementing a zero-waste policy – by using 100% of the log.

Much like BSW, Binderholz employs a circular approach to its business, implementing value creation throughout the supply chain.

Although headquartered in Fügen, Austria, Binderholz now operates in almost 30 locations worldwide, with 6000 employees across Europe, the US and now the UK sharing a passion for producing wood.

BSWGROUP member of binderholz ■

Cross Laminated Timber

binderholz CLT BBS has a multilayer construction, completely made of solid wood. By bonding the longitudinal and transverse layers together, any warping of the wood - swelling or shrinkage - is reduced to a negligible level.

This means it can comfortably meet the requirements of a modern building material.

The solid finished component can carry high loads, is fireproof, enables rapid construction without water, and has sound and heat insulating properties. It regulates the humidity of the air inside the building, creating a comfortable and balanced climate - in both summer and winter.

CLT BBS makes design and construction easier. It guarantees defined structural-physical and mechanical properties, so that the designed building physics can be easily implemented and tested as well.



Credit: ZillerSeasons



Credit: Conné van d'Grachten



Advantages

Uncomplicated | quick | dry

Bbs solid wood construction combines the well-known advantages of solid structures such as sound insulation, fire protection, solid construction, retained value, etc. With the environmental benefits of a sustainable raw material, wood.

- **Prefabricated system component:**
 - Short construction times
 - High degree of prefabrication
 - Simple details
- **Crosswise construction:**
 - High dimensional stability 2-axis
 - Load transfer possible
- **More space:**
 - Relatively small component thicknesses are possible
 - Creating an economic ratio of gross to net floor area.
- **Permeable:**
 - BBS acts as a vapour barrier
 - So that largely film free construction is possible
- **Wood mass:**
 - Comfortable living environment
 - Heat storage in winter
 - Insulation in summer
- **Visual quality:**
 - Pleasantly warm wood surfaces,
 - Nature in architecture

see more at [binderholz.com](https://www.binderholz.com)

Glulam

binderholz is a full-range supplier of glulam products. Its core competence lies in the production of straight as well as special shaped beams. Glulam consists of at least three timber lamellas glued parallel to the grain.

Through grading by strength and homogenization of the timber lamellas, a high level of load-bearing capacity is achieved in comparison to common construction timber.

High load-bearing capacity, dimensional stability, product variety and excellent surface quality allow for a broad range of application options in construction.

Advantages

uncomplicated | fast | light | stable

- Load-bearing capacity
- Dimensional stability
- Short construction times
- Low weight
- High value surface quality
- High level of prefabrication
- Large variety of shapes
- Small component dimensions with high strength levels
- Architectural and constructional versatility

see more at [binderholz.com](https://www.binderholz.com)



The Cladding Range

What better way to stand out from the crowd than by lovingly cladding your building with timber? Not only does timber cladding exude a timeless natural charm from your project, it also offers added protection from the elements.

Timber cladding also helps to act as a naturally produced carbon store, helping to reduce the overall CO2 emissions from your build.



Cladding

Without doubt the external finish of a building or structure is paramount to its overall appeal.

Timber cladding can enormously improve the exterior aesthetic of a structure. Using timber to clad a building can either modernise or traditionalise new or existing buildings in equal measure.

We select only the highest quality logs sourced from certified forests to create our cladding boards. Our boards come from a heartwood-based selection and are kiln dried and appearance graded to ensure the finest timber product.



Cladding

Thickness (mm)	Width (mm)	Length (m)	Species	Profile	FSC® Certified	Use Class
13	100	2.4 3.0 3.6	Redwood	PTGJV1S	-	UC2/3
16	100 125	4.2+	Redwood	PTGJV1S T&G Shiplap A D/P Lining	-	UC2/3
19	88 100 125 150	4.2+	Redwood	PTGJV1S Beaded Rebated Shiplap B T&G Shiplap A D/P Lining	-	UC2/3
22	100 125	4.2+	Whitewood	Log Lap	-	UC2/3
25	125 150	4.2+	Redwood	Blanks PTGJV1S	-	UC2/3
25	150	4.2+	Redwood	Shiplap V Red C	-	UC2/3
25	125	4.2+	Redwood	Log Lap	-	UC2/3
25	125	3.3 3.6	Larch	Blanks	Yes	UC3
25	150	3.3 3.6	Larch	Blanks	Yes	UC3

Bespoke sizes and specifications available on request
– subject to availability and volume.

Key: ● Green Treatment ● Brown Treatment



Beaded PTGV



Loglap



PTGV



T&G Shiplap



Rebated Shiplap



Heavy Duty Feather Edge

Our Heavy Duty Feather Edge cladding is an exterior solution for finishing your building.

Wider than our traditional larch cladding profile, our heavy-duty weatherboard is produced from a tapered redwood timber board, layered thick end over thin end to create an attractive lap effect.

Utilising timber to protect your home from the elements also helps to reduce your project’s carbon footprint as the natural timber locks away harmful CO2 from the environment. We select only the finest FSC certified timber to create our weatherboard, making it a sustainable yet strong natural cladding solution.



Cladding

Thickness (mm)	Width (mm)	Length (m)	Species	Profile	FSC® Certified	Use Class
19	150	3.6 - 5.1	Redwood	Feather Edge, Square Edge	Yes	UC3

Bespoke sizes and specifications available on request – subject to availability and volume.

Key: ● Green Treatment ● Brown Treatment



IRO External Cladding

Manufactured in Britain using our finely tuned six-step process, IRO architectural cladding is a unique product that's designed to enhance all building exteriors – and IRO's water repellent, self-cleaning surface ensures that any dirt and dust is simply washed away.

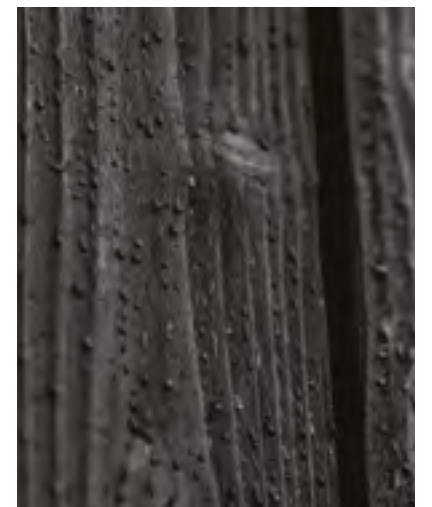
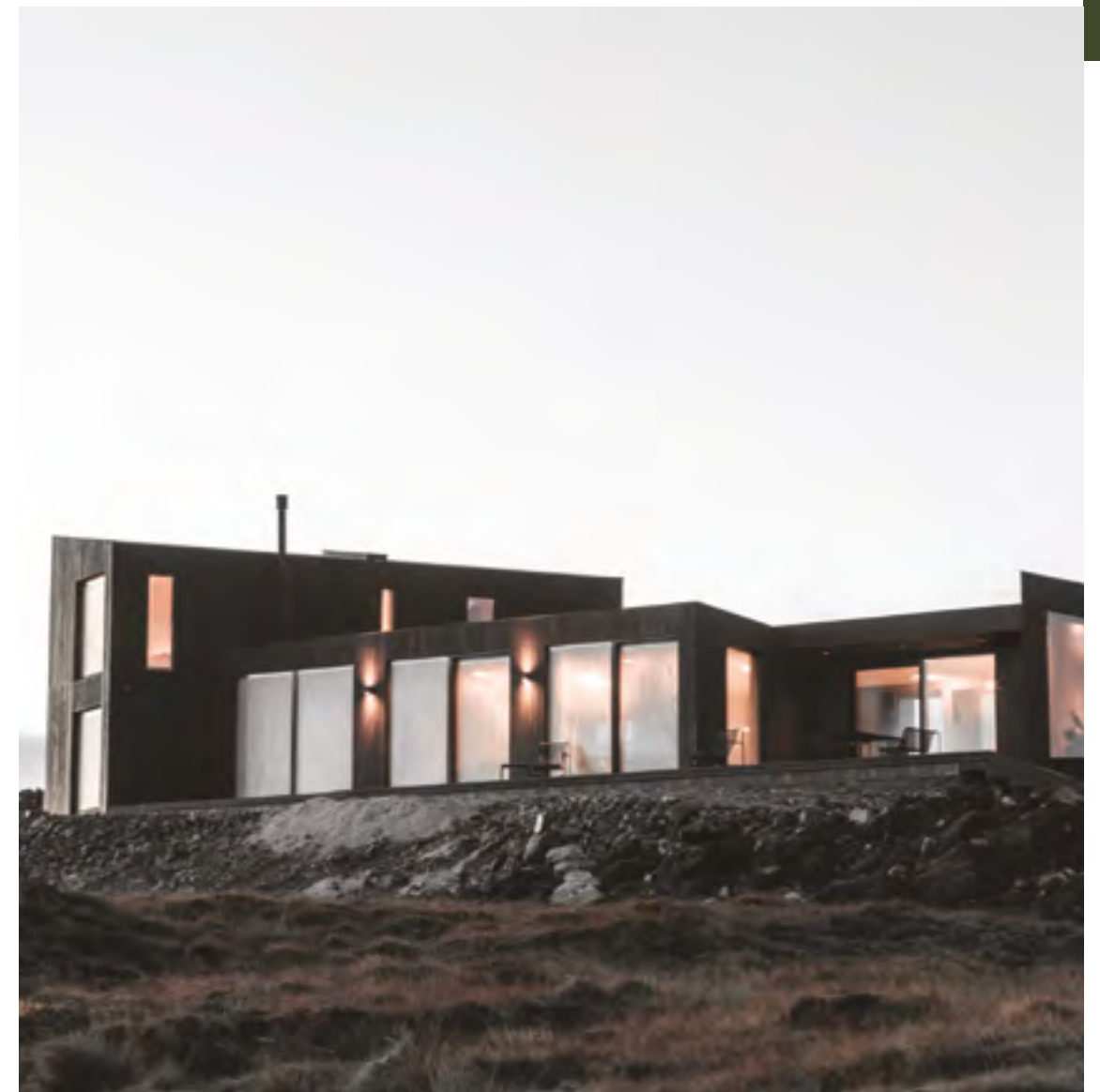
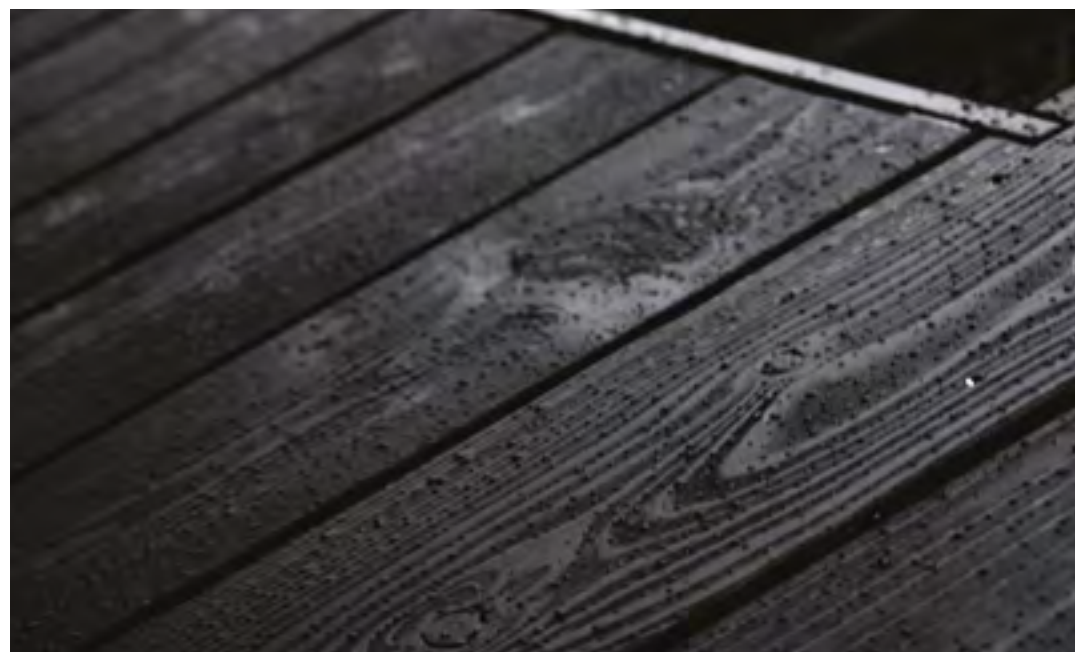
Inspired by Yakisugi, the age-old method of enhancing timber with heat, IRO external cladding can make any outdoor space either more modern or more traditional depending on the way it's used.

The unique natural charm of IRO can be used to colour block any project – whether that's adding a touch of nature to the exterior of a commercial project such as a school or hospital, or to reinvigorate the outside of your home or garden in its daring charcoal hue.

IRO is heat-enhanced and coated in UV-stable wood cream. It's not only more durable and self-cleaning, but also features a more defined and tactile grain appearance than traditional alternatives. If you're ready to make your outdoor space memorable, it's time to discover the transcendental power of IRO.

Thickness (mm)	Width (mm)	Length (m)	FSC certified
25	150	3.6	Yes

visit [bsw.co.uk](https://www.bsw.co.uk) to learn more



The Internal Range

Research has shown that using natural timber in our homes and workplaces has been linked with feelings of wellbeing and productivity.

Timber's natural visual appeal has also been shown to lower blood pressure and create a soothing environment, so whether you're looking to clad your chill-cave or line your lounge, we'll have the timber to transform your internal space.

BSW Timber's processing sites produce an array of internal timber profiles, crafted from responsibly sourced imported and softwood timbers.



Decorative Micro CLT

Binderholz supplies single, three-layer solid wood panel for use in high quality interior fittings, furniture making and for use in structural wood construction work.

Decorative Micro CLT is a 3-Layer solid wood spruce panel with tongue and groove connections on all four edges. It provides a highly decorative finish for a multitude of high quality interior construction projects.

These new and innovative panels are brand new to the UK market and are hugely flexible, versatile, and perfect for internal projects such as:

- Doors
- Cabinets
- Shelving
- Shop Fit Outs
- Garden Rooms
- Garages
- Sheds & Small Buildings
- Wall Panels
- Ceiling Panels
- Feature Walls
- Partition Walls
- Furniture
- Staircases & Stair Parts

see more at [binderholz.com](https://www.binderholz.com)





Softwood PSE and Door Linings

Made from high quality, responsibly sourced softwood, our door linings are crafted here in the UK. They are available in a wide variety of dimensions to fit any interior door space including standard and fire certified sets.

Our precision machined PSE is available in various sizes for a range of applications, such as panelling, framing and shelving.

Softwood PSE and Door Linings

22mm Whitewood PSE (Wider Board)

22mm Whitewood PSE

25 x 50 Redwood PSE

25 x 175 Redwood PSE

32 x 115 Redwood PSE

32 x 138 Redwood PSE

32mm Whitewood PSE

50 x 50 Redwood PSE

50 x 75 Redwood PSE

50 x 100 Redwood PSE

Door Casing Set 1

Door Casing Set Detail

Door Lining Set Fire Check

Door Lining Set With Stop Detail

Door Lining With Stops

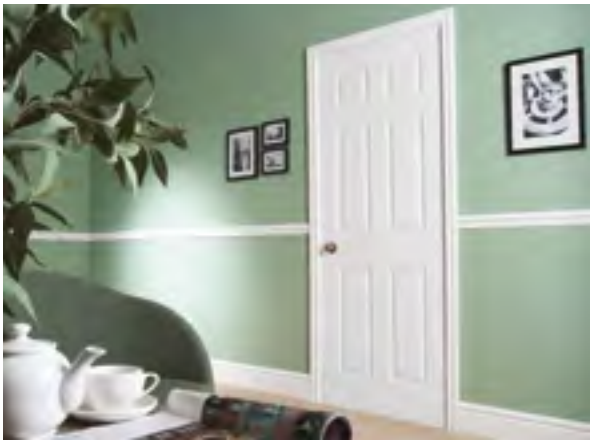
Door Stop

Doorlining

Fire Check Door Casing Set Detail

Fire Check Door Lining Detail

Fire Check Door Stop



MDF

BSW now also supply a range of expertly crafted, finished Medium Density Fibreboard (MDF) mouldings in an array of profiles and dimensions, offering the perfect finishing touch to the home, whatever the job.

Our mouldings are white primed and all set for an undercoat and gloss finish after installation.

MDF

Torus

Chamfer & Round

Pencil Round

Bullnose

Window Board

Ogee



Softwood PSE

Redwood PSE

Thickness (mm)	Width (mm)	Lengths / Grades	PEFC Certified
16	38 50 75 100 150	Random and Fixed Lengths	Yes
19	38 50 75 100 150	Random and Fixed Lengths	Yes
32	38 115 138 150 175 225	Redwood	Yes
38	38 50 75 100 150 175 225 275	5th Redwood (275 Laminated)	Yes
50	50 75 100 150 225	-	Yes
75	75 100	-	Yes
100	100 (G/S C/F)	-	Yes

Whitewood PSE

Thickness (mm)	Width (mm)	Lengths / Grades	PEFC Certified
22	50 75 100 125 150 175 200 225	4.2+ Random Lengths	Yes
25	275	Random Lengths	Yes
32	275	Sawfalling Grades	Yes
32	250 (nosed) 275	Random Lengths	Yes
38	250 275	Random Lengths	Yes
50	50 75	2.4 (50mm) 4.2+	Yes

Door Linings and Casings

Shrink Wrapped Door Lining Sets

Species/Material	Thickness (mm)	Width (mm)	Profile	PEFC Certified
Whitewood	32	100	50x75 CLS 2'6"/2'9"	Yes
Whitewood	32	115	47x75 Eased Edge 2'6/2'9	Yes
Whitewood	32	115	2'3/2'6, 2'6/2'9	Yes
Whitewood	32	125	50x100 CLS 2'6/2'9	Yes
Whitewood	32	138	2'3/2'6, 2'6/2'9	Yes
Whitewood	32	150	2'6/2'9	Yes
Whitewood	32	175	2'6/2'9	Yes
Redwood	38	115 138 150	BWF Fire Certified 15x4 Groove 2'6/2'9	Yes

Shrink Wrapped Door Casing Sets

Species/Material	Thickness (mm)	Width (mm)	Profile	PEFC Certified
Redwood	38	100 115 125 138 150	2'6 2'9	Yes
Redwood	38	175	2'9	Yes
Redwood	50	100 115 125 138 150	Fire Certified Groove Untrenched 1.0m	Yes
Redwood	63	100 115 138 150	Fire Certified Groove Untrenched 1.0m	Yes

MDF Mouldings

MDF Architectural Mouldings

Thickness (mm)	Width (mm)	Length (m)	Profile	PEFC Certified
12 14.5	68	4.2	R2A	Yes
12 14.5	68	4.2	R2A Ogee & Bead Bullnose Chamfered	Yes
14.5	44 69 94 119 144	4.2	Pencil Round	Yes
18	57 69 119 144 169	4.2	Ogee Taurus	Yes
18	44 69 94 119 144	4.2	Pencil Round	Yes
18	69 119 144	4.2	Chamfered	Yes

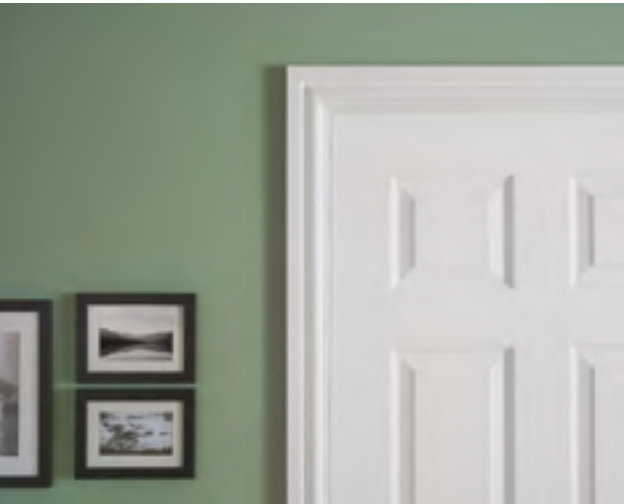
MDF Windowboards

Thickness (mm)	Width (mm)	Length (m)	Profile	PEFC Certified
25	169 194 219 244 269 294 394	3.66	-	Yes

Skirtings

We offer a range of quality skirting and architrave timbers in a variety of sizes to suit any home.

Our products are expertly produced from responsibly sourced softwood at our factory in the UK. Machined in a variety of profiles to finish off any project perfectly - ideal for everything from contemporary styles to period room pieces.



Skirtings

19mm Bullnose Arch	19mm Bullnose Skirting	19mm Chamf Arch	19mm Chamfered Bullnose Skirting
19mm Lambs Tongue Arch	19mm Pencil Arch	19mm Pencil Round Skirting	19mm Pencil Round Splayed Skirting
25mm Double Sunk Skirting	25mm Lambs Tongue Arch	25mm Ogee Arch	25mm OGEE Skirting
25mm Ovolo Arch	25mm Torus Arch	25mm Torus Lambs Tongue Skirting	25mm Torus Ogee Skirting
25mm Torus Skirting	25mm Torus Splayed Skirting	Pencil Round Chamfered Skirting	

Floorings and Mouldings

Our internal flooring ranges are created from both imported redwood and whitewood.

Our moulding range offers an array of profiles and dimensions perfect for injecting the natural warmth of timber directly into your home.



Mouldings

25mm Redwood T&G	25x50 Dado Rail	25x50 Picture Rail	50mm Mopstick Handrail
Redwood T&G	Wall Fix	Weather Bar	Window Board



Redwood Skirtings

Thickness (mm)	Width (mm)	Lengths/Grades	Profile	PEFC Certified
19	75 100 125 150	4.2+ / Random	Chamfered	Yes
			Bullnose	
			Pencil Round	
19	100 150	5ths	Splayed	Yes
			R1A	
25	125 150 175 225	4.2+ / Random / 5ths / Unsorted	Lambs Tongue	Yes
			Ovolo	
			Torus	
			Splayed	
			Double Sunk 9"	

Redwood Architraves

Thickness (mm)	Width (mm)	Lengths / Grades	Profile	PEFC Certified
19	50 75	2.1m and 4.2m	Ogee & Bead	Yes
19	50 75	2.1 4.2 / 5ths	Bullnose	Yes
			Chamfered	
			Pencil Round	
25	50 75	2.1 4.2 / 5ths	Ogee	Yes
			Torus	
			Lambs Tongue	
			Ovolo	
25	63	2.1	Splayed	Yes
			Ogee C Pat	

Redwood Doorstops

Thickness (mm)	Width (mm)	Length (m)	Profile	PEFC Certified
16	38	2.1 4.2	Unsorted Doorstop	Yes
16	50	2.1		Yes
19	38	2.1		Yes
32	38 50	2.1 4.2	Firecheck	Yes

Decorative Mouldings

Thickness (mm)	Width (mm)	Length (m)	Profile	PEFC Certified
25	50 75	-	Dado Rail B	Yes
25	50	-	Picture Rail C	Yes
50	63	0.9	Door Weather Mould	Yes
50	50	-	Mopstick	Yes
50	100	4.2	Wallfix	Yes
32	225	-	Unsorted Windowboard	Yes

Flooring

Thickness (mm)	Width (mm)	Length (m)	Species	Profile	PEFC Certified
22	125 150	-	Whitewood	Sawfalling	Yes
25	125 150	-	Redwood	5th 12% KD	Yes
32	150	-	Whitewood	Sawfalling	Yes

Timber Kits and Bespoke Mouldings

Working alongside BSW Group members BSW Timber Solutions and Bayram Timber we can provide a range of bespoke timber services.

BSW Timber Solutions are a manufacturer and distributor of timber products for the home improvement and builders merchant markets, while Bayram Timber are a market leading timber manufacturer and key supplier into the UK's caravan, leisure home and garden sectors.

Every customer is unique, so we treat every customer as such. Using the scale, flexibility and capabilities these BSW Group members, together we can design truly bespoke timber products with custom packaging to suit every business or project.

Our softwood can be delivered planed, pressure treated, profiled, cut to length, drilled, shaped, notched, trenched, scribed, bevelled and mitred.

BSW Group member Bayram Timber are specialist manufacturers offering a complete processing solution, from planed and profiled timber to component products and bespoke timber kits. We can also stamp and label to your exact specification.



Milling

Bayram Timber is one of the UK's largest independently owned planing mills, with nine advanced planing lines processing up to 100,000m³ of sustainably sourced timber each year. Our capabilities include stock pattern or bespoke profiles and finished sizes. We encourage runs of 10m³ or more, but smaller quantities can be accommodated on request.

Machined timber can be supplied to order. We can also carry stock footprints and provide rolling stocks of in-demand contract items.

Bespoke Timber Components

Our dedicated factory manufacturers planed and profiled timber into bespoke components and machined products.

We use highly advanced, automated machinery to provide end-users with bulk supply of componentised timber sections. These are made to exact specifications and can be directly introduced to end-users' production areas, with no need for further manufacture.

Timber Kits

We've worked closely with customers in the leisure homes sector, transforming finished components into groundbreaking timber kits with just-in-time delivery.

Our packed and labelled timber kits are popular with end-users who want to:

- Reduce raw material stock footprint
- Lower production costs
- Minimise waste
- Improve efficiencies
- Increase competitiveness
- Enhance production capability

Labelling and Stamping

Our services extend to printing and applying labels to individual timber pieces for retail barcoding, or for component identification in assembly factories.

For customers who export timber and require proof of heat treatment, we can roller print of heat treatment registration numbers on every piece of milled timber.



Powersheds®

Powersheds are now a commercial partner of BSW Group. Powersheds epitomises an unprecedented leap in the garden shed industry.

We've made choosing, buying, and assembling high-quality sheds powerfully simple. By combining genius craftsmanship, superior materials, fast delivery, and excellent service, we've created the most satisfying shed experience... from start to finish.

It shouldn't be innovative. But it is.

Powersheds is now a commercial partner of BSW Group. Powersheds epitomises an unprecedented leap in the garden shed industry.

Visit powersheds.com to view the full range of products.

Award Winning

A lot of research goes into manufacturing our sheds. So, we're extremely proud that our garden sheds are the UK's most-awarded.

We received this title thanks to numerous independent and unbiased consumer associations and testing facilities agreeing that Powersheds are among the very best on the UK market.

Our Awards include:

- 20th Fastest Growing Company in the UK, according to The Sunday Times
- The Number 1 Best Shed According to Real Homes
- The eBay Award for Innovation
- Great British Entrepreneur Award for 'Disruptor of the Year'
- Design & Build Award for 'Excellence in Shed Design & Manufacturing - UK'
- Lloyds National Business Award for 'Best New Business'
- Corporate LiveWire Prestige Award for 'Outdoor Living New Business of the Year'

Garden Sheds

Our garden sheds are so adaptable that you can put the door and window panels in any position. This allows you to fit the shed perfectly to your garden layout.

You can place the doors in any position on any side and you can even choose which way round the hinges are. Our sheds are modular which means you can fit even the largest shed through your house and into your back garden.

All our sheds come with shiplap tongue and groove cladding and heavy-duty framing. Even the roof panels and floor panels are tongue and groove - there is no OSB or chipboard in any of our garden sheds.

The framing is extra thick and includes corner bracing which maximises the strength in the shed. Our sheds are also more sturdy with less flex than many standard apex sheds on the market.

Any shed from Powersheds comes with galvanised ironmongery - this includes the door hinges, turn buttons, shoot bolts (on double doors) and even a door pull which surprisingly is missing from many other shed companies.

If you order a shed with windows, you can rest assured that the glazing is toughened to provide maximum security. The PVC sills at the bottom of the window allows rainwater to run down the window and off the shed protecting the piece of timber below the window.

see more at
powersheds.com/garden-sheds



Summerhouses

Our range of premium quality summerhouses is made from high grade Scandinavian timber which is slow grown and responsibly sourced.

With both apex and pent summerhouses on offer and the ability to position the door section in any place as you build it, there is a summer house here for you.

Power Summerhouses come with premium full pane doors and windows. The double doors are professionally joiner made with a mortice and tenon joint. Both doors and windows come pre glazed with toughened safety glass.

The Power Summerhouse is completely adaptable, allowing you to position the doors and windows on any side as you build it. Full fixings and instructions are provided to offer a great product which is easy to install.

All features are high in quality, from superior grade tongue and groove timber throughout, to galvanised ironmongery and polyester high performance felt.



see more at
powersheds.com/summerhouses

Log Cabins

Our garden log cabins come in a range of sizes, in both apex and pent roof styles. They come complete with uPVC double doors in anthracite grey and uPVC 'Tilt and Turn' opening windows. All glass is both toughened and double glazed – perfect for extra security and insulation.

All log cabins are made from high grade Scandinavian timber, responsibly and sustainably sourced. This is a product which is premium in quality and built to last.

High Grade Timber

The walls of the log cabin are 44mm thick made from high grade, responsibly sourced, Scandinavian timber. No inferior log cabin timber profiles are used whatsoever. The floor, and roofs are comprised of tongue & groove boards to ensure the log cabin is robust and durable. Tanalised timber bearers are provided to lift the log cabin off the ground to further protect the floor.

Contemporary Touches

Attractive features such as the external sills are on all windows, and the 'easy access' aluminium low threshold sills on the doors add to the functionality of your building, as well as the aesthetic. Further attention to detail is reflected in the Burford style skirting which provides the perfect finish to the inside of the log cabin.

50-year life expectancy

The roof of our log cabin is designed to protect the building from all kinds of weather. It has an innovative EPDM rubber roofing system which comes with a 50-year life expectancy. This includes a gutter edge drip plate to allow rainwater to run off and away from the sides of the log cabin, ideal for the UK climate and various conditions."



The Pallet LOOP

The Pallet LOOP is now part of BSW Group and is transforming how building materials move by incentivising pallet returns via a cost-effective, easy-to-use, returnable pallet system. This arm of our business provides the construction industry with a simple, circular approach to pallet use that's greener, leaner, safer and smarter.

Don't skip green LOOP pallets:
Reduce your waste bill with
The Pallet LOOP

If you regularly receive products on pallets, look out for a new line of circular economy bright green pallets, which are being used to distribute building materials nationwide and could earn you up to £4 each when you return them for reuse. Produced by The Pallet LOOP these distinctive green wooden pallets are designed to be used again and again, helping companies up and down the country reduce waste, cut carbon and save money on pallet disposal costs.

The Pallet LOOP estimates that putting pallets in wood skips can cost up to £8 per pallet depending on where you are in the country. Put that money together with the LOOP PayBack, and companies using The Pallet LOOP could be up to £12 better off for every green LOOP pallet that gets recovered.

To sign up, book a collection or for more information, please visit: thepalletloop.com



HOTTIES^{XL}

Market leading performance

Sustainably manufactured

We manufacture clean and sustainable wood fuels using high quality wood chips and sawdust – co-products from our own sawmilling process. All our products are sustainably sourced from well-managed forests.

Made from 100% renewable materials

Hotties XL Heat Logs offer an attractive flame with sustained heat output. Manufactured from raw materials, such as compressed sawdust and wood chips, they're easy to light and offer a low ash residue - keeping your stove and chimney cleaner for longer.

Hotties XL logs are denser and contain around 8% moisture, making them significantly drier than seasoned logs, kiln-dried logs, and other heat logs. This results in a more powerful and consistent heat output. As a result, they are more cost-effective and convenient, offering better value by producing more heat per log due to their low moisture content.



Easy to stack



Clean and sustainable



Sustained heat with an attractive flame



Low ash residue to keep stoves and chimneys clean



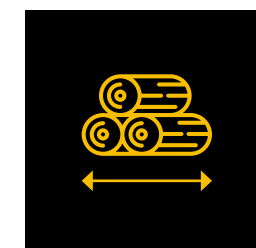
Low moisture content (<8%) compared with wood logs (20-60%)



No spitting or sparking



Use alone or mix with regular fuels



Each log approx. 255mm x 90mm

Technical Information



Treatment Information

Strength Graded Timber

Softwoods are the most frequently used timbers for load bearing projects. However, in order to comply with Building Regulations, the timber must always be strength graded.

In the UK, softwoods are graded visually, in accordance with BS4978, or by machine to EN14081. When graded visually, all defects in each piece (such as knots, slope of grain, wane, fissures, wormholes etc), are assessed and measured against the appropriate standards.

Preservative Treated Timbers

We provide a range of preservative timber treatments specifically suited for the end use of your timber.

Timber is classified into one of 5 use classes dependant on where the timber will be used (as shown on the table below).

1	2	3.1	3.2	4
Internal, dry e.g. upper floor joists	Internal, risk of wetting e.g. tile battens	Outdoors, coated, above ground e.g. window frames	Outdoors, uncoated above ground e.g. fence panels	Direct soil or fresh water contact e.g. fence posts

The use classes are based on the potential threat to the timber from effects such as decay or insect attack during its application. The higher the threat the higher the use class and the higher the level of preservative protection required.

Incised Fence Posts, Sleepers and Joists

BSW Timber’s incised products utilise an innovative well-established North American practice of incising prior to the treatment of the timber component.

This pre-treatment process involves precise incisions on each of the four faces of the sawn product to ensure sufficient levels of preservative penetration (6mm in the analytical zone) and retention are achieved from the subsequent treatment

At BSW Timber we offer both machine and visually graded timber products. C16 machine graded products are used for carcassing projects. Visually and mechanically graded products can also be used for agricultural purposes and can be available for load bearing large sections.

Beams which are load bearing are visually graded to both GS and SS grades which dependent on species and section are equivalent to grades C14, C16, C18, C22 and C24 therefore giving maximum design flexibility.

Preservative treatments are based on different chemicals for the different applications, and are applied in a pressure vessel (treatment tank) in one of two ways: either low pressure (UC1 and 2) or high pressure (for UC2, 3 and 4), depending upon the species being treated.

Low-pressure treatments are generally suitable for internal timbers such as timber frame studding and roof trusses where the level of hazard is low, and/or the wood species has some natural durability to begin with. Low pressure treated timber is identifiable by its golden yellow colour.

High-pressure treatments are required for higher risk environments such as exterior timbers for fence posts, boards, rails and general landscaping timbers. High pressure treated timbers have an initial green or rich brown colouration.

For posts, joists and sleepers, this process ensures support of the 15 Years Desired Service Life as stipulated within the Standard BS8417 Preservation of Wood - Code of Practice.

This uniquely engineered system developed in Britain by BSW Timber takes the performance level beyond BS8417 by ensuring preservative penetration is achieved within the heartwood area of the timbers as well as the sapwood area.

Species Information

Our market leading timber utilises several different species:



Sitka Spruce (Picea sitchensis)

A true Spruce, Sitka is a native of North America, although it is one of the most commonly planted timber trees in the UK: forming the main part of our British spruce. It is similar in appearance to European Whitewood, but British grown material is often much coarser in texture, with larger and more numerous knots.



Scots Pine (Pinus sylvestris)

A true Pine, this is one of the two most used softwoods in the UK, and it comes in a range of qualities, each preferred for various end uses. It is a pale, creamy-coloured timber, with a pinkish-brown tinge to the heartwood: and this reddish colour gives the wood its common trade name.

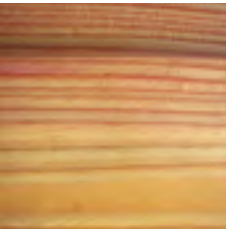
Trees from more Northerly, colder latitudes (e.g. Northern Scandinavia, Russia) are of slower growth and give timber of a finer texture than wood of the same species from elsewhere in Europe. When grown in the UK, this species is called Scots pine and it is one of our few native conifers.



Douglas Fir (Pseudotsuga menziesii)

Another native of North America, but also planted to some extent in the UK. Douglas Fir is a very large tree, producing timber in long lengths and large sizes.

It is a very distinctive wood with a deep orange-red heartwood and a very marked contrast between the earlywood and latewood parts of the growth ring, thus giving rise to a distinctive “flame” figure in flat-sawn material, and a pronounced “comb” figure when quarter-sawn.



Larch (Larix decidua & Larix kaempferi)

British-grown Larch is (rather in the same way as Spruce and Pine) a mixture of more than one species. Most of the British Grown Larch is hybrid (Larix x eurolepis) with a small amount of European Larch (Larix decidua) and Japanese Larch (Larix kaempferi).

British Larch is denser than other British grown Softwoods - about 550 kg/m3 - and it has a resinous heartwood which is strikingly orange pink in colour when freshly felled, later fading to pinkish or brick red. It is clearly separated from the creamy-white sapwood. Its natural durability is an average class of 3, though as with all larch species this ranges between 2 and 4. Larch generally has a lot of small knots, which are scattered along the length of a sawn board. It can be used for all the end-uses to which Spruce and Pine are put and is increasingly popular for external cladding (and in this end-use, it is also helped by its durability rating).

Warranty Information

BSW's commitment to you.

Because of our use of the latest generation TANALITH wood preservative and the quality of our treatment procedures, BSW has real confidence in the products we send to market.

Our 15-year UC4 performance warranty gives you real confidence in their long-term performance. In the unlikely event that our UC4 timber products should fail due to decay or insect attack within 15 years of purchase, BSW Timber will replace the failed timbers* providing they have been installed, maintained and used correctly.

*Full details of our warranty conditions are available to download at [bsw.co.uk](https://www.bsw.co.uk)



Responsible Purchasing

We source all our material from well-established and ethically managed sources.

All our timber is FSC® or PEFC certified. Chain of Custody certification traces the wood from forest to distribution, ensuring you receive timber that is from legal, environmentally appropriate, socially beneficial, and economically viable forests.

BSW Timber is a proud member of Grown in Britain, a government backed campaign designed to create a sustainable future for British forests and woodlands. Specific aims include creating a new and stronger market pull for British forest products, developing private sector funding to support woodland creation, and promoting a strong wood culture throughout our society.



With thanks to our customers and installers

Koto Design & Living
Westward Ho!
07375 790488
[kotodesign.co.uk](https://www.kotodesign.co.uk)

Bark Brick & Block
North West
07754 209481
[barkbrickblock.com](https://www.barkbrickblock.com)

PDB Timber Solutions
Westbury
01373 481444
[pdbtimbersolutions.co.uk](https://www.pdbtimbersolutions.co.uk)

Healy Fencing & Landscaping
West Midlands
[healyfencing.co.uk](https://www.healyfencing.co.uk)

All Nu Landscapes
Glasgow
0141 724 0777
[instagram.com/all_nu_landscapes](https://www.instagram.com/all_nu_landscapes)

Would you like your images featured in our brochure?

Send your submissions to marketing@bsw.co.uk





BSW
Timber

BSWGROUP member of **binderholz** ■

Carlisle Sawmills, Carlisle, CA6 4BA | Tel: 0800 587 8887 | sales@bsw.co.uk | bsw.co.uk